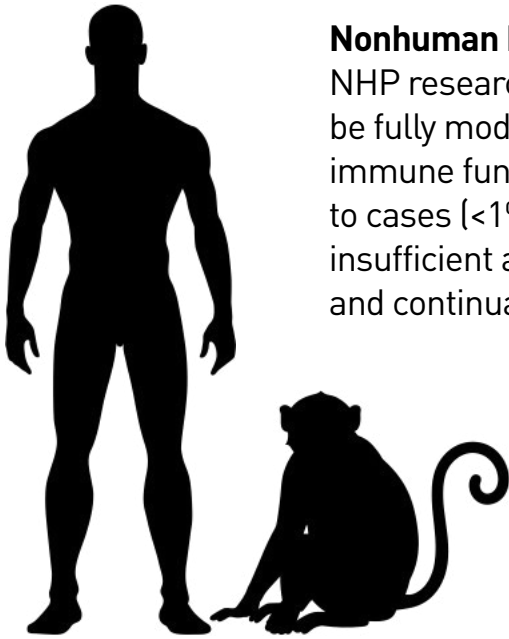


## Research with Nonhuman Primates



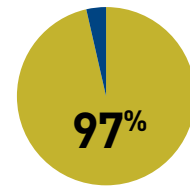
### Nonhuman Primates (NHPs) Are Vital to Biomedical Discovery

NHP research supports advances in areas where human biology cannot be fully modeled otherwise, including neuroscience, infectious disease, immune function, vision, and reproductive health. Their use is limited to cases (<1% of all animal research) when other scientific models are insufficient and is governed by rigorous oversight, high standards of care, and continual efforts to research practices and reduce animal use.

### High Biological Relevance for Translational Research

Scientists are required to justify their use of NHPs based on clear biological relevance and evidence of research translatability — not cost, time, or convenience.

The most common NHP model, Rhesus macaques, share 97% of their genes with humans, making them especially effective models for conditions and disease processes that cannot be adequately replicated using other animal models or alternative methods.



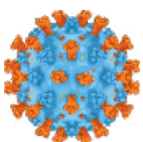
## Major Medical Discoveries from NHPs<sup>1</sup>:



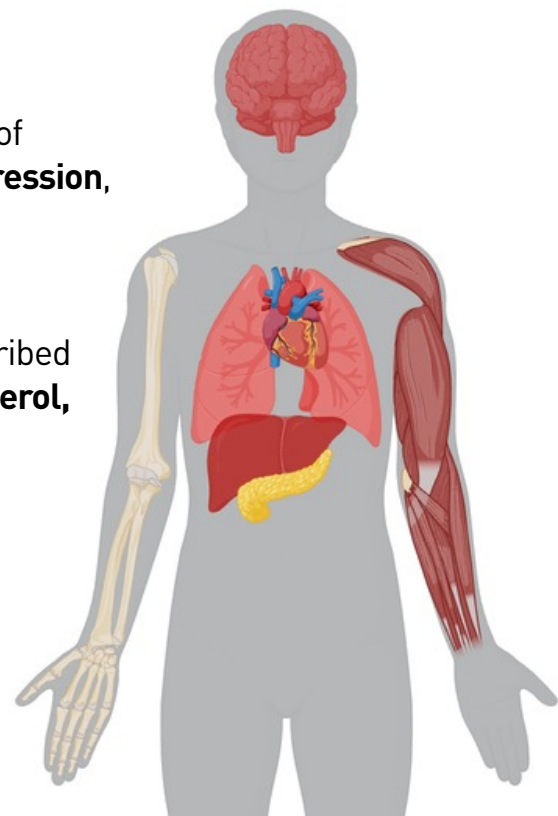
NHP models are actively used in the development of treatments for **Alzheimer's, Parkinson's, and depression**, including novel interventions such as Deep Brain Stimulation and drugs targeting amyloid plaques.



NHP models were used to develop the most prescribed medications to treat **Type 2 Diabetes, high cholesterol, and cardiovascular disease**.



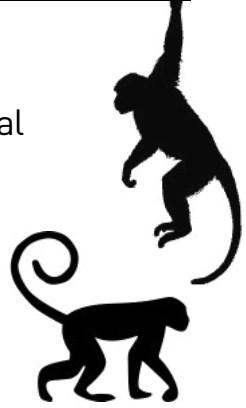
NHPs are essential to research on **viral threats** (e.g., HIV, Zika, COVID) and the development of vaccines, preventing widespread disease.





## Ensuring Ethical Research: Animal Welfare and Regulations

Programs are designed to meet the needs of each animal while supporting critical and ethical science. What is in place to ensure this?



Animal housing, diet, and enrichment are tailored to each species' unique behavioral needs.



Whenever possible, animals are housed in pairs or groups to accommodate the complex social needs of NHPs.

Specialized veterinarians oversee animal health and wellbeing, providing preventative care and ensuring humane treatment.



Anesthesia and pain management are required for procedures that may cause discomfort, following the same careful standards used in human medicine.



**National Primate Research Centers (NPRCs)** are federally funded institutions dedicated to advancing human health through NHP research<sup>2</sup>. NPRCs centralize expertise, enabling advanced research, quality animal care, and ethical breeding programs that reduce costs for U.S. institutions.

**Rigor and reproducibility:** NPRCs use standardized protocols that produce high-quality data.

**Openness and transparency:** NPRCs are publicly accountable and are open to public tours.

**Ethical Sourcing:** NPRCs do not use wild caught NHPs but maintain colonies cared for by specialist veterinary staff.

### Federal law and regulations set the animal welfare standards.

- Animal Welfare Act<sup>3</sup>
- NIH conditions for funding
- Public Health Service policy<sup>4</sup>
- USDA inspections

### Local oversight boards ensure that standards are met.

- Institutional Animal Care and Use Committee<sup>5</sup>

### Independent accreditation promotes excellence in animal welfare.

- Association for Assessment and Accreditation of Laboratory Animal Care<sup>6</sup>

1. [The Critical Role of Nonhuman Primates in Medical Research](#)  
2. [About NPRCs | nprc.org](#)  
3. [Animal Welfare Act | National Agricultural Library](#)

4. [PHS Policy on Humane Care and Use of Laboratory Animals](#)  
5. [The IACUC | OLAW](#)  
6. [About | AAALAC.org](#)